



EVH series EVH 12390



Valve Regulated Lead Acid Battery

Maintenance-Free Sealed Lead Acid Battery.
Absorbent Glass Mat (AGM) technology for efficient gas recombination of up to 99%.

General Design for Cyclic Applications

【Design Life】

400 cycles @ 100%DOD at 25°C
1800 cycles @ 30%DOD at 25°C

【Operating Temperature Range】

Nominal Operating Temperature : 25°C (77°F)
Discharge : -15°C ~ 50°C (5°F~122°F)
Charge: -15°C ~ 40°C (5°F~104°F)
Storage: -15°C ~ 40°C (5°F~104°F)

【Certification】

IEC 60254-1:2005 / IEC60254-2:2008

【Equalization Charging Voltage】

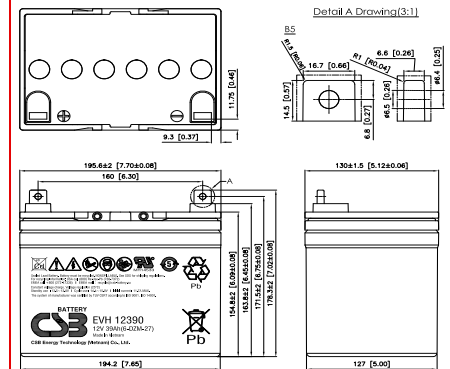
14.4 ~ 15.0 VDC/Unit at 25°C (77°F)

【Self Discharge】

Less than 10% after 90 days, can be stored up to 6 months at 25°C (77°F); Fully recharging is required before usage, and charged sooner if stored at higher temperature than 25°C (77°F).

Specification

| | | | |
|----------------------------|---|--------------|----------------|
| Nominal Voltage | 12V (6 cells per unit) | | |
| Nominal Capacity | 39 Ah @20hr-rate to 1.75V per cell @25°C (77°F) | | |
| Weight | Approx. 11.50 Kg (25.35 lbs) | | |
| Maximum Discharge Current | 400 A (5sec) | | |
| Internal Resistance | Approx. 8.9 mΩ | | |
| Short Circuit Current | 987.5 A | | |
| Maximum Charge Current | 11.70 A | | |
| Terminal types | B5 terminal to accept M6 nut & bolt | | |
| Terminal tightening torque | 51.7±10.3 Kgf-cm / 44.9±9.0 Lbf-in / 5.10±1.0 N-m | | |
| Container Material | ABS (UL 94-HB) | | |
| Dimensions | Length (L) | 195.6±2.0 mm | 7.70±0.08 inch |
| | Width (W) | 130.0±1.5 mm | 5.12±0.06 inch |
| | Container Height (h) | 154.8±2.0 mm | 6.09±0.08 inch |
| | Overall Height (H) | 178.3±2.0 mm | 7.02±0.08 inch |



Constant Current Discharge Characteristics Unit: A (25°C, 77°F)

| F.V/Time | 30MIN | 45MIN | 60MIN | 90MIN | 2HR | 3HR | 4HR | 5HR | 6HR | 8HR | 10HR | 20HR |
|----------|-------|-------|-------|-------|-------|------|------|------|------|------|------|------|
| 1.60V | 39.6 | 28.2 | 23.3 | 17.8 | 14.4 | 10.4 | 8.25 | 6.93 | 5.58 | 4.68 | 3.89 | 2.13 |
| 1.67V | 38.5 | 27.7 | 22.9 | 17.5 | 14.2 | 10.3 | 8.19 | 6.87 | 5.51 | 4.60 | 3.81 | 2.06 |
| 1.70V | 37.4 | 27.0 | 22.4 | 17.2 | 14.0 | 10.2 | 8.13 | 6.79 | 5.43 | 4.53 | 3.73 | 2.01 |
| 1.75V | 36.4 | 26.6 | 22.0 | 16.8 | 13.7 | 10.1 | 8.04 | 6.71 | 5.36 | 4.46 | 3.67 | 1.96 |
| 1.80V | 35.4 | 26.0 | 21.6 | 16.6 | 13.50 | 9.93 | 7.94 | 6.62 | 5.29 | 4.40 | 3.60 | 1.91 |
| 1.85V | 34.3 | 25.5 | 21.1 | 16.2 | 13.30 | 9.78 | 7.80 | 6.52 | 5.20 | 4.33 | 3.54 | 1.87 |

Constant Power Discharge Characteristics Unit: W (25°C, 77°F)

| F.V/Time | 30MIN | 45MIN | 60MIN | 90MIN | 2HR | 3HR | 4HR | 5HR | 6HR | 8HR | 10HR | 20HR |
|----------|-------|-------|-------|-------|-----|-----|------|------|------|------|------|------|
| 1.60V | 475 | 340 | 280 | 213 | 172 | 124 | 99.0 | 83.2 | 67.0 | 56.2 | 46.6 | 25.5 |
| 1.67V | 463 | 335 | 276 | 210 | 170 | 123 | 98.1 | 82.4 | 66.2 | 55.3 | 45.6 | 24.8 |
| 1.70V | 451 | 328 | 271 | 207 | 168 | 122 | 97.2 | 81.5 | 65.2 | 54.4 | 44.8 | 24.1 |
| 1.75V | 438 | 319 | 265 | 204 | 166 | 120 | 96.2 | 80.5 | 64.4 | 53.6 | 44.0 | 23.5 |
| 1.80V | 425 | 312 | 260 | 201 | 163 | 119 | 95.0 | 79.4 | 63.4 | 52.8 | 43.3 | 22.9 |
| 1.85V | 412 | 302 | 253 | 197 | 160 | 117 | 93.7 | 78.2 | 62.5 | 52.0 | 42.6 | 22.4 |

Please refer to the official site for the latest rating confirmation. URL: www.csb-battery.com

Issued: 200924

Sales Offices

希世比能源科技股份有限公司
CSB Energy Technology Co., Ltd.

BUSINESS HEADQUARTERS

Tel: +886-2-2880-5600
Fax: +886-2-2888-3300

USA OFFICE

Tel: +1-817-244-7777 / 1-(800)3-CSB-USA (272872)
Fax: +1-817-244-4445

SHENZHEN OFFICE (CHINA)

Tel: +86-755-8831-6488/6775/6075
Fax: +86-755-8831-6548

EUROPE (EMEA) OFFICE

Tel: +31(0)180-418-140
Fax: +31(0)180-418-327

SHANGHAI OFFICE (CHINA)

Tel: +86-21-5046-1622/0833/0094
Fax: +86-21-5046-1046

Recognized under UL 1989,
and certified by ISO 9001, 14001, 45001, 50001.



TAIPEI OFFICE

Tel: +886-2-2880-5600
Fax: +866-2-2888-3300

BEIJING OFFICE (CHINA)

Tel: +86-10-6597-8065/8165/8265
Fax: +86-10-6597-8565